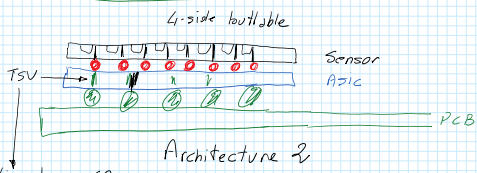
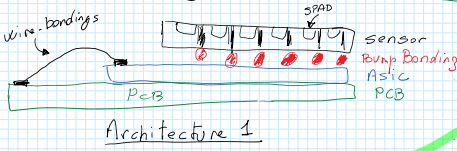
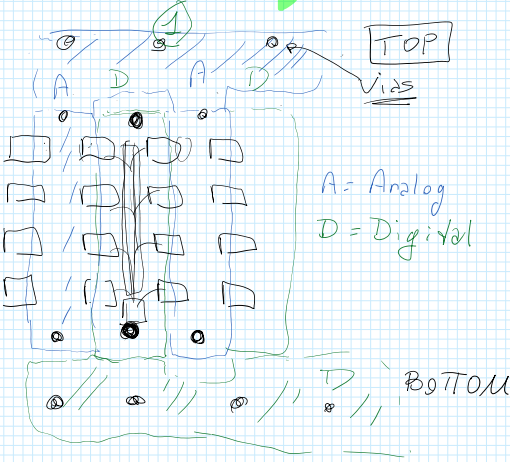


Meeting 08/07/2022

$\lambda = 400 - 485 \text{ nm}$

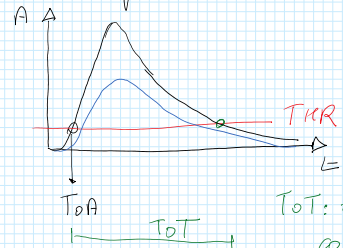


TSV diameter $\approx 60 \mu\text{m}$
 P.S. Alexander, please check this number?



Specifications/features:

- 4.2 mm^2 = optical fiber area
- More pixels per fiber
- pixel size?
- pile-up / event rate?
- Measurements: ToT, ToA, angle of photon,
- zero suppression
- photon rate:
 - > from 1 to 15 $\text{mns}/4.2 \text{ mm}^2$
 - > $\text{mns}/\text{rate} = 20 \mu\text{s}$
 - > time resolution $< 4 \text{ ns}$



ToT: also for time-walk correction